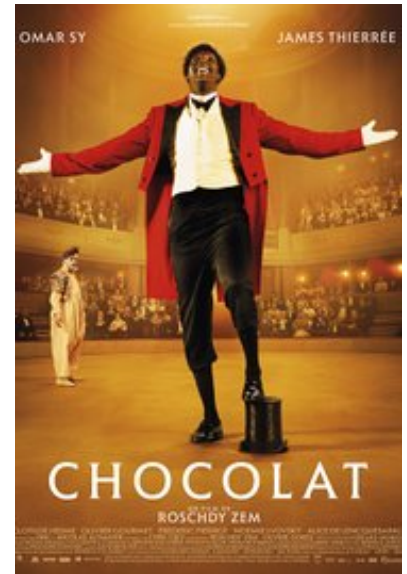


Chocolat / All Out (2016, directed by Roschdy Zem with Omar Sy and James Thierrée)



1. The relationship between Chocolat and George is somewhat tense throughout the movie. What do you think are some of the causes of that tension? Is it Chocolat or George or some other thing this is most responsible for that tension?
2. The literary form known as tragedy is the story of the downfall and destruction of a potentially great character (like Othello!), but the essence of tragedy is that the downfall and destruction must be self-inflicted rather than caused by some external thing. Do you think Chocolat's story is a genuine tragedy: is he ultimately responsible for his own downfall or is it some environmental force that brings him down?
3. This movie is set in the late 19th and early 20th century, well over a hundred years ago, at a time when there were very few Africans living in Europe. Clearly, Chocolat is rarely treated as an equal by the French and often he is seriously mistreated and even tortured. By setting this movie in the historical past, are the makers of this movie trying to downplay or even excuse the racism exhibited by the French? Or are we meant to judge the French as thoroughly and inexcusably racist?